

# GRANGE PARK REVITALIZATION

Community Meeting – Final Design

2014.07.07



## PROJECT PARTNERS:

Grange Park Advisory Committee ■ Art Gallery of Ontario ■ Mr. W. Galen Weston ■ City of Toronto

## AGENDA

1. Welcome and Introductions
2. Community Feedback from April 22, 2014
3. Design Update
4. Next Steps
5. Discussion (Q & A)



### PROJECT PARTNERS:

Grange Park Advisory Committee ■ Art Gallery of Ontario ■ Mr. W. Galen Weston ■ City of Toronto

## COMMUNITY FEEDBACK

- **Off-leash accommodation for dogs**
- **Pathways**
- **Children's play area**
- **Respect the natural beauty of the site**



### PROJECT PARTNERS:

Grange Park Advisory Committee ■ Art Gallery of Ontario ■ Mr. W. Galen Weston ■ City of Toronto





## SITE'S NATURAL BEAUTY

- Revisions made to the overall geometry of the site plan allow more trees to be retained
- Paths narrowed to create more opportunities for planting beds and green space

## INFORMAL PATHS

- Narrower more informal paths provide alternative routes through the park
- Greater hierarchy of circulation paths provide a range of experiences

### PROJECT PARTNERS:

Grange Park Advisory Committee ■ Art Gallery of Ontario ■ Mr. W. Galen Weston ■ City of Toronto



## PROPOSED DOG OFF-LEASH AREA

- As an extension of the Grove, a small area within the planting beds and existing trees provides a fenced in area for dogs.
- Custom seating, a water fountain for dogs, and irrigation to keep the ground clean are being considered



## CHILDREN'S PLAY

- A play space for younger children is located to the north to provide a protected play space away from the vehicular traffic on Grange Road and the maintenance drive.
- In close proximity to University Settlement a sand box and exploratory garden with informal play pieces provide play opportunities for younger children.

### PROJECT PARTNERS:

Grange Park Advisory Committee ■ Art Gallery of Ontario ■ Mr. W. Galen Weston ■ City of Toronto





### PROJECT PARTNERS:

Grange Park Advisory Committee ■ Art Gallery of Ontario ■ Mr. W. Galen Weston ■ City of Toronto





### PROJECT PARTNERS:

Grange Park Advisory Committee ■ Art Gallery of Ontario ■ Mr. W. Galen Weston ■ City of Toronto





### PROJECT PARTNERS:

Grange Park Advisory Committee



Art Gallery of Ontario



Mr. W. Galen Weston



City of Toronto





### PROJECT PARTNERS:

Grange Park Advisory Committee

■ Art Gallery of Ontario

■ Mr. W. Galen Weston

■ City of Toronto





### PROJECT PARTNERS:

Grange Park Advisory Committee

■ Art Gallery of Ontario

■ Mr. W. Galen Weston

■ City of Toronto





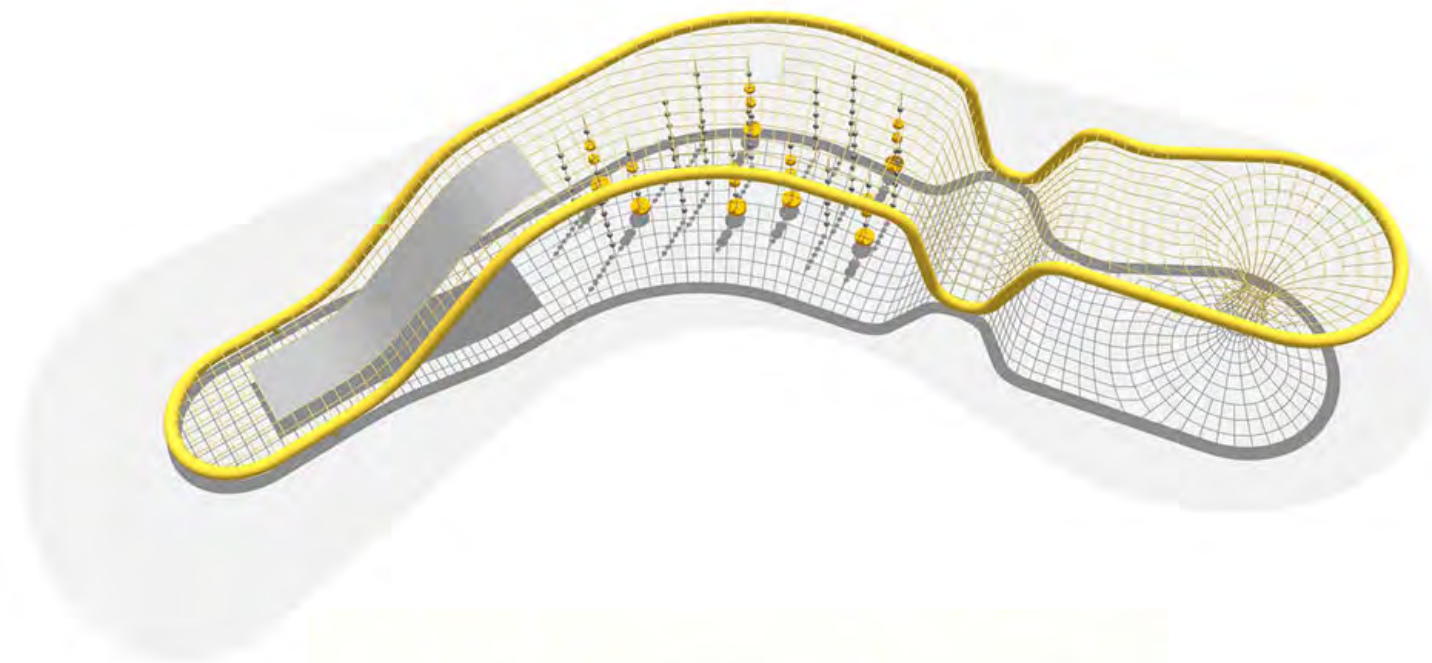
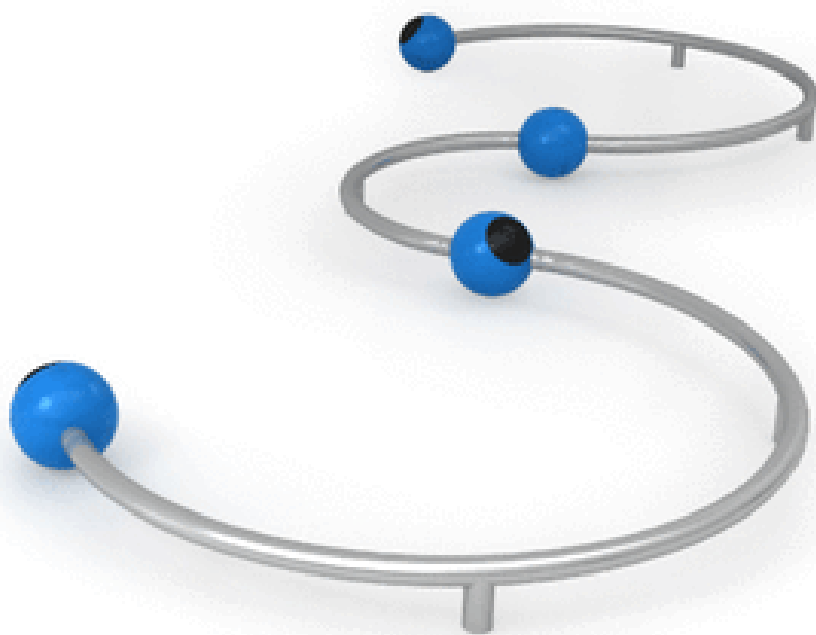
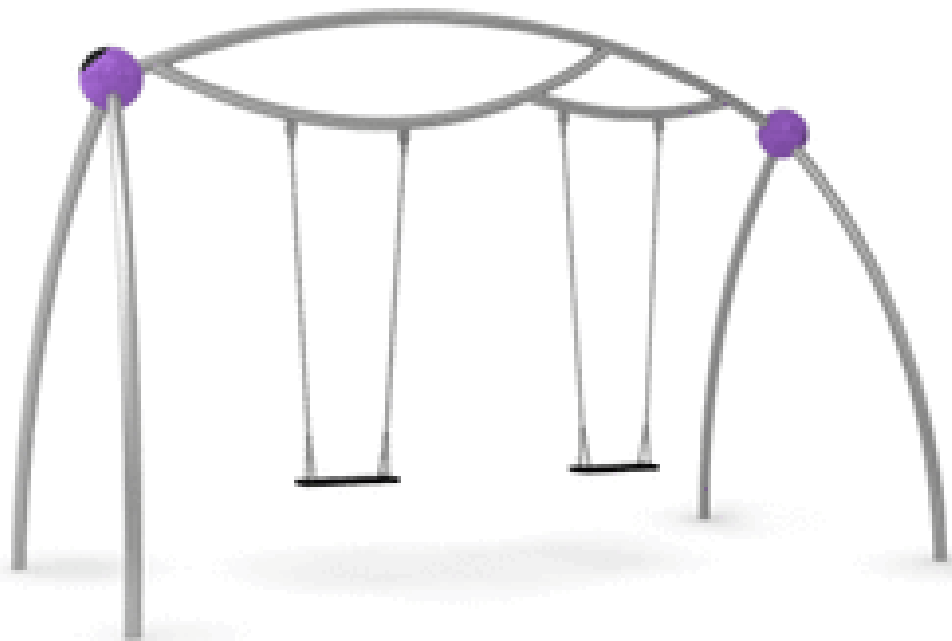
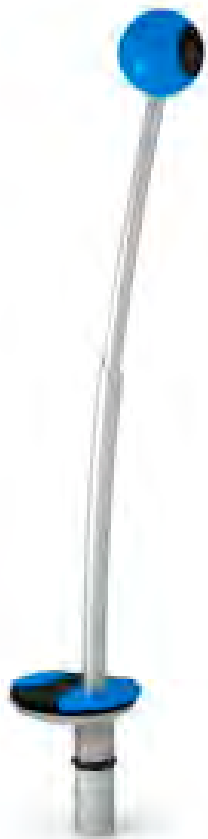
### PROJECT PARTNERS:

Grange Park Advisory Committee ■ Art Gallery of Ontario ■ Mr. W. Galen Weston ■ City of Toronto



URBAN DESIGN  
BERLIN

Product Specification



PROJECT PARTNERS:

Grange Park Advisory Committee



Art Gallery of Ontario



Mr. W. Galen Weston



City of Toronto





Leg NW106



Cross NW202



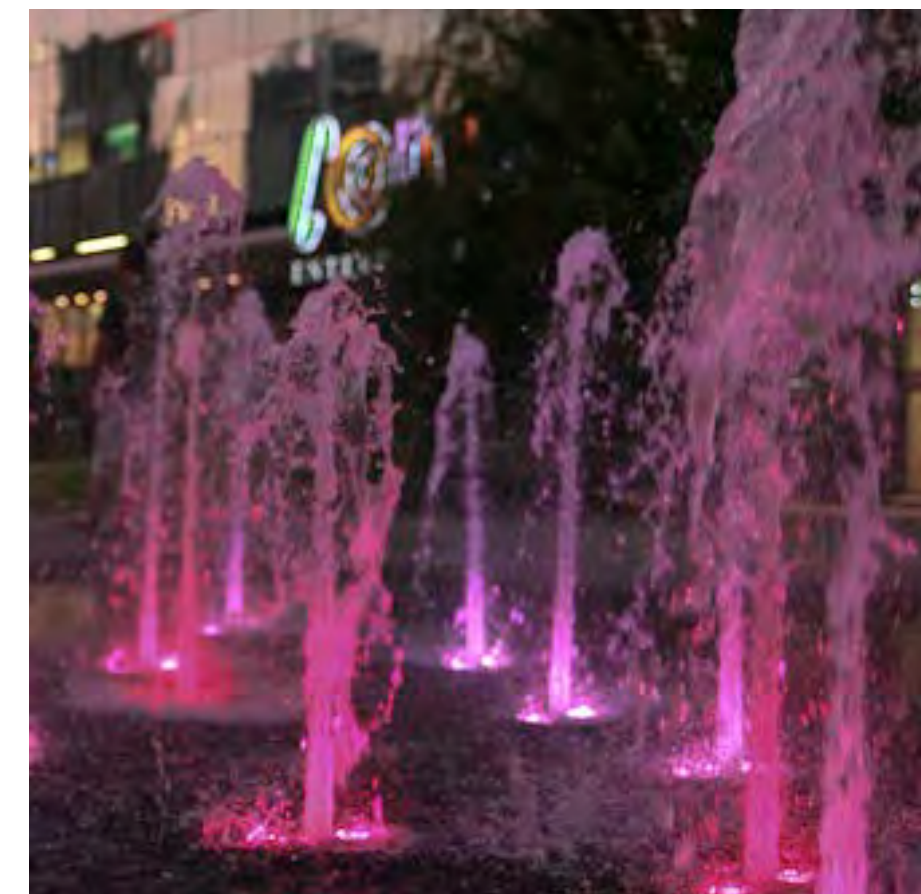
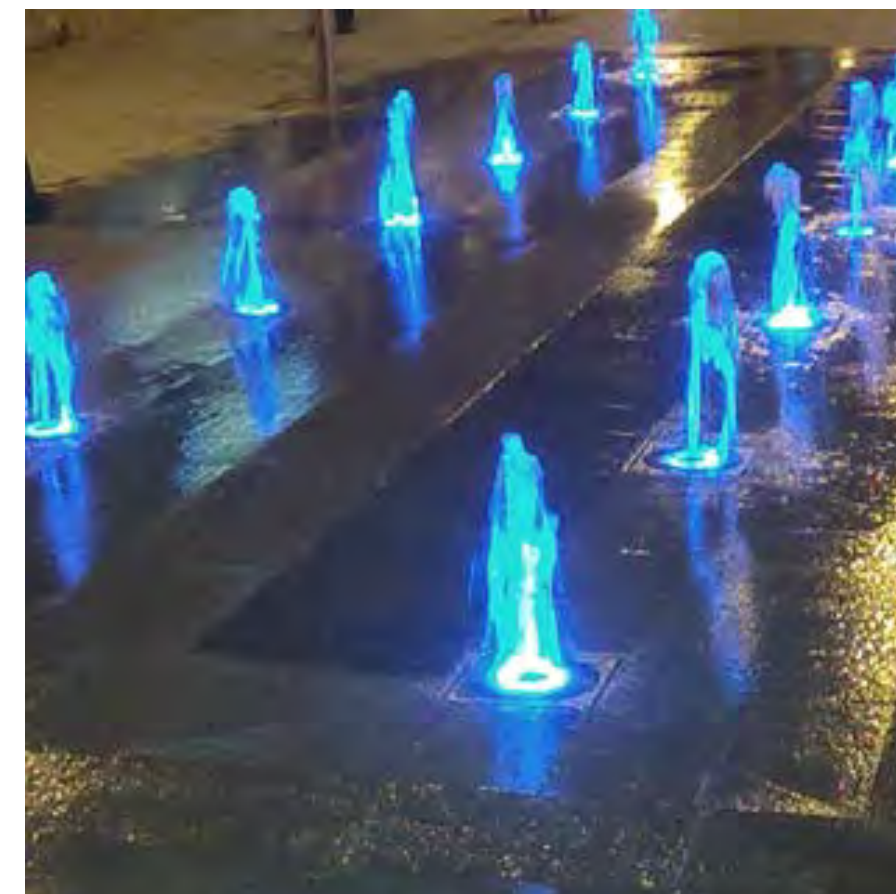
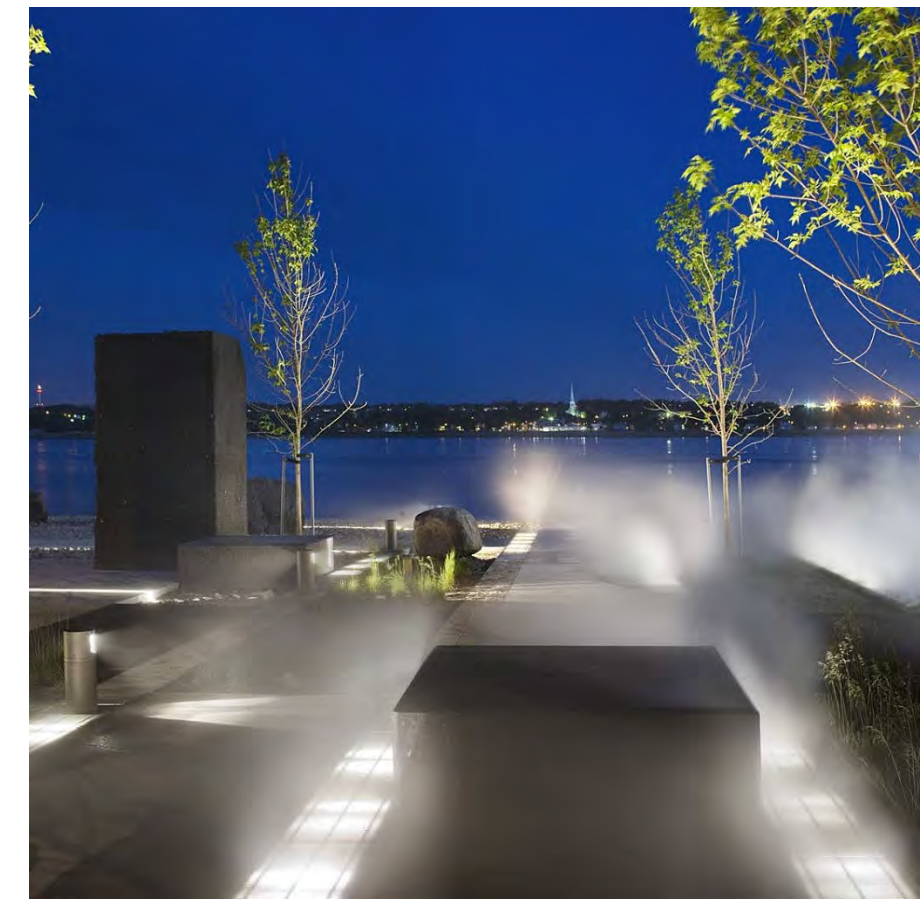
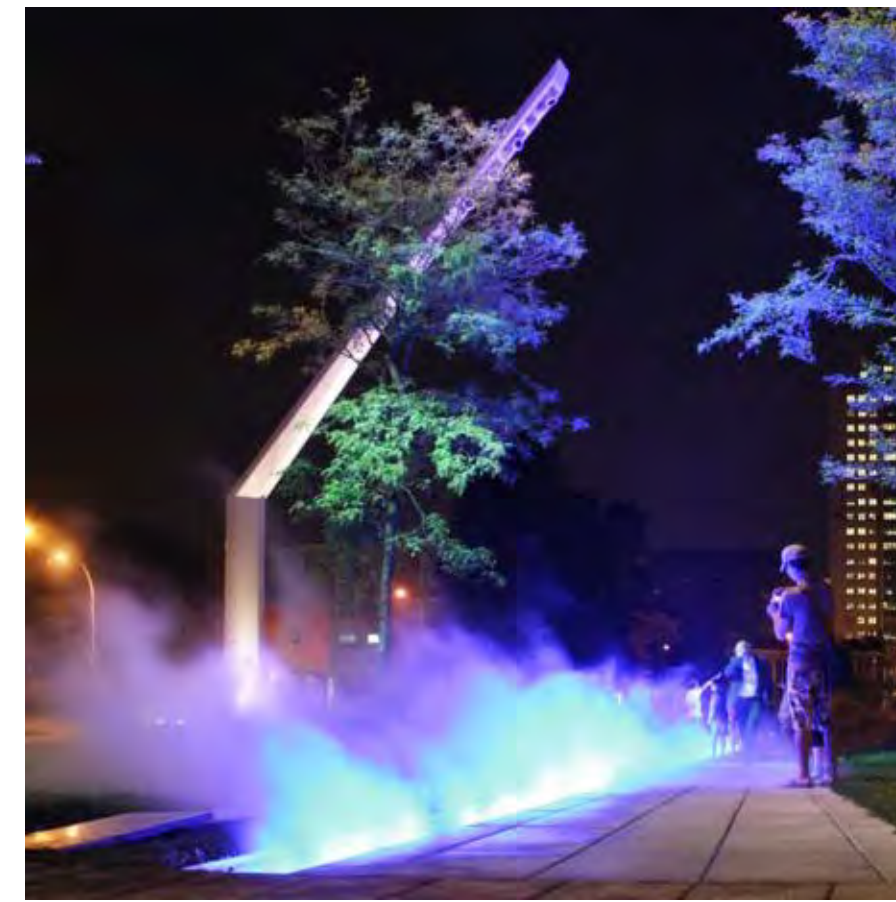
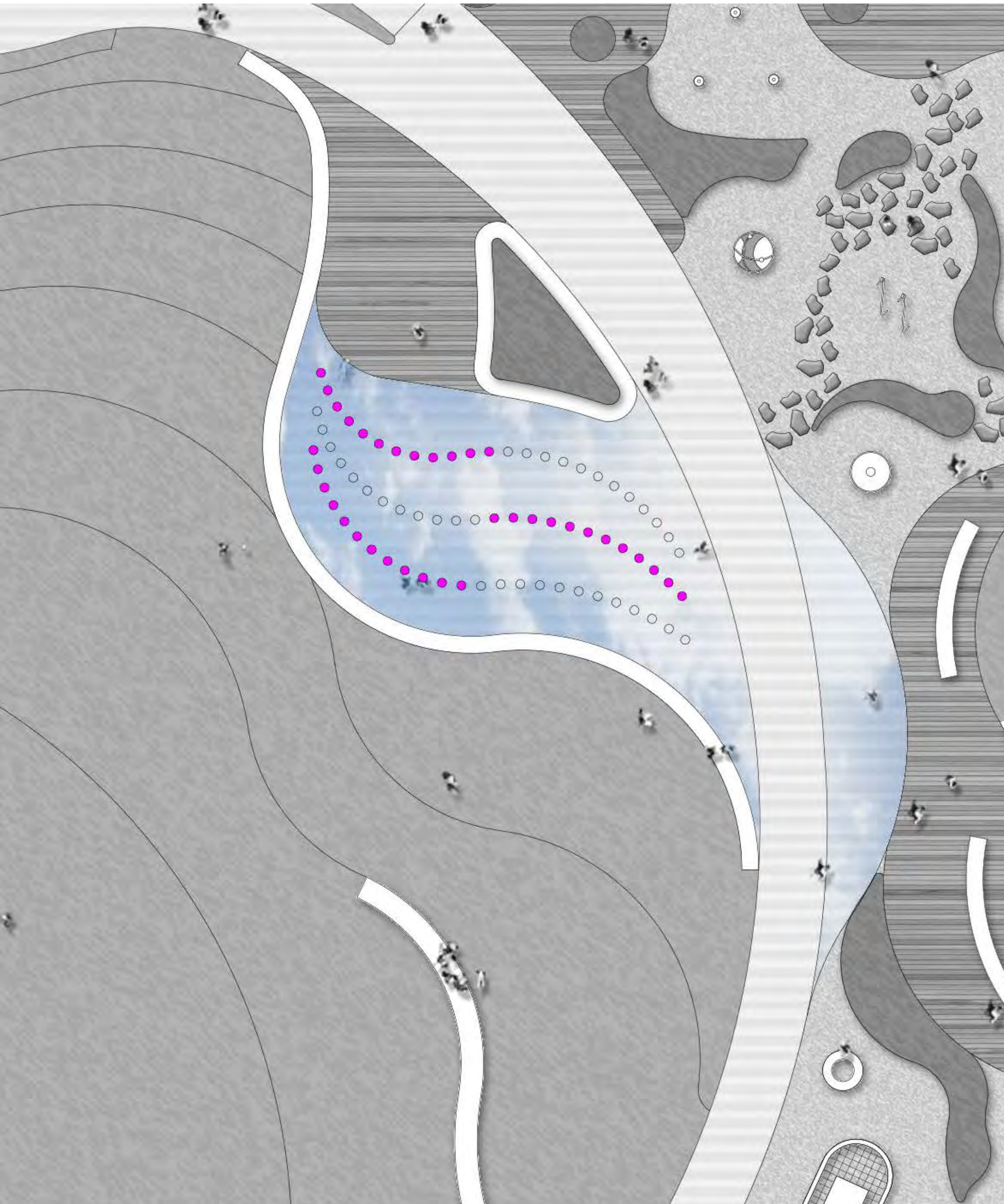
Air Walker NW201



Hip NW204







### PROJECT PARTNERS:

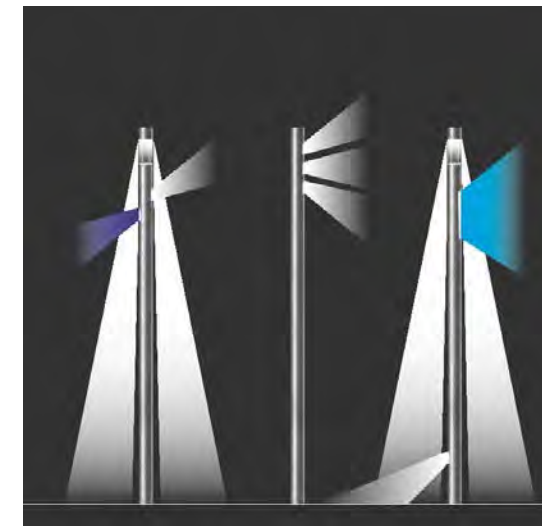
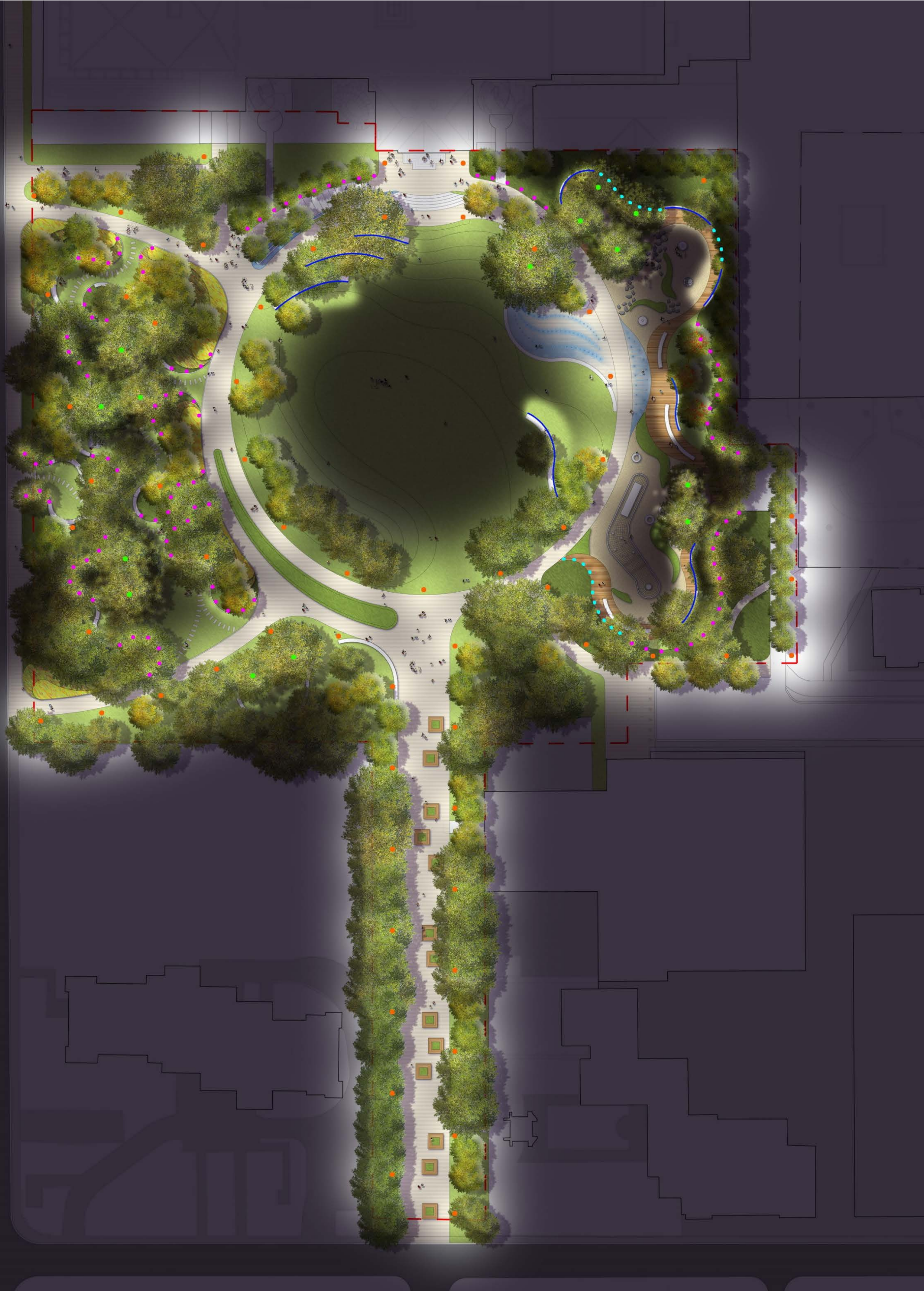
Grange Park Advisory Committee

■ Art Gallery of Ontario

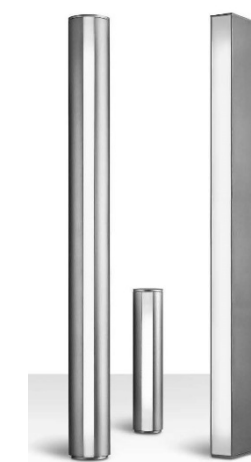
■ Mr. W. Galen Weston

■ City of Toronto

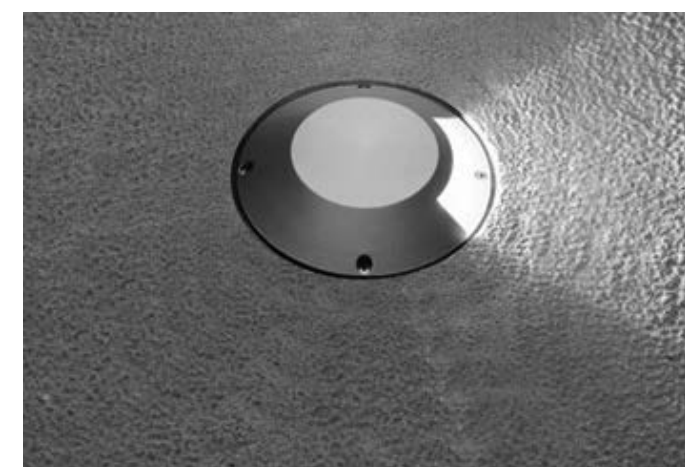




LIGHT POLE - HESS NIGHT ELEMENTS



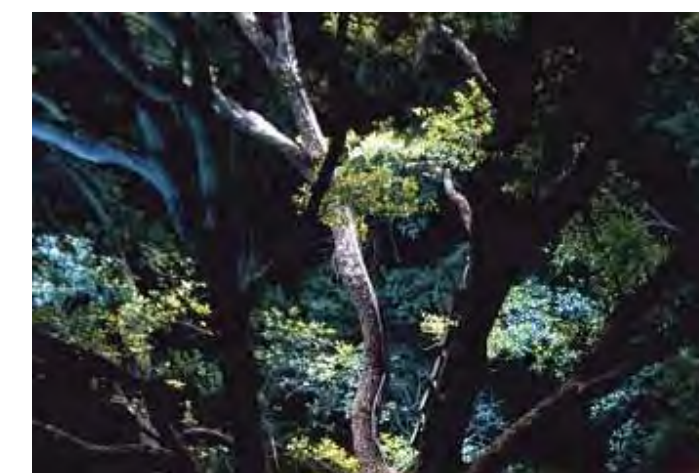
BOLLARD - IGUZZINI IWAY PENCIL



IN GROUND - IGUZZINI SPARK



TREE LIGHTING



## PROJECT PARTNERS:

Grange Park Advisory Committee

■ Art Gallery of Ontario

■ Mr. W. Galen Weston

■ City of Toronto



# GRANGE PARK

## TREE STRATEGY



### PROJECT PARTNERS:

Grange Park Advisory Committee ■ Art Gallery of Ontario ■ Mr. W. Galen Weston ■ City of Toronto



Arborist reports prepared in 2008 & 2014 assessed the health of the existing trees within Grange Park that has informed a strategic tree succession plan for the future.

### CURRENT STATUS:

- Currently 127 trees in Grange Park
- Some of the trees are in poor health and decline.
  - 52 Good
  - 57 Fair
  - 4 Fair to Poor
  - 14 Poor
- If we do nothing, we will lose 20 - 25% of our trees in the park due to age, emerald ash bore and disease.



### PROJECT PARTNERS:

Grange Park Advisory Committee

■ Art Gallery of Ontario

■ Mr. W. Galen Weston

■ City of Toronto





### PROJECT PARTNERS:

Grange Park Advisory Committee

■ Art Gallery of Ontario

■ Mr. W. Galen Weston

■ City of Toronto



## 187 Trees in Grange Park (60 Additional trees)



### OPPORTUNITY:

- Create a tree succession strategy for the next generation of quality trees to preserve Grange Park for the future .
- Provide areas for people to better occupy the west side of the park by bringing more light through an opened canopy.

### PROPOSED TREE STRATEGY:

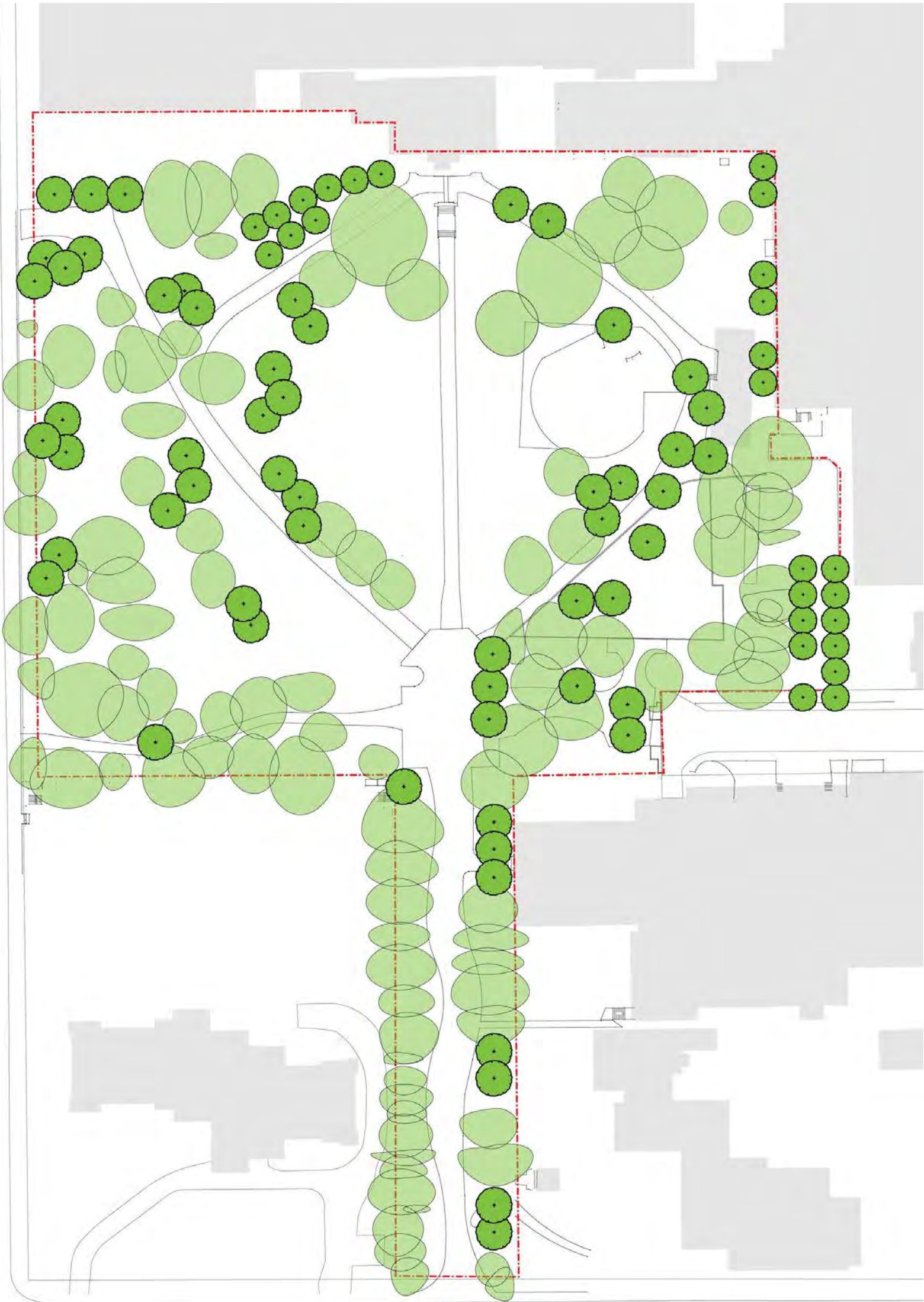
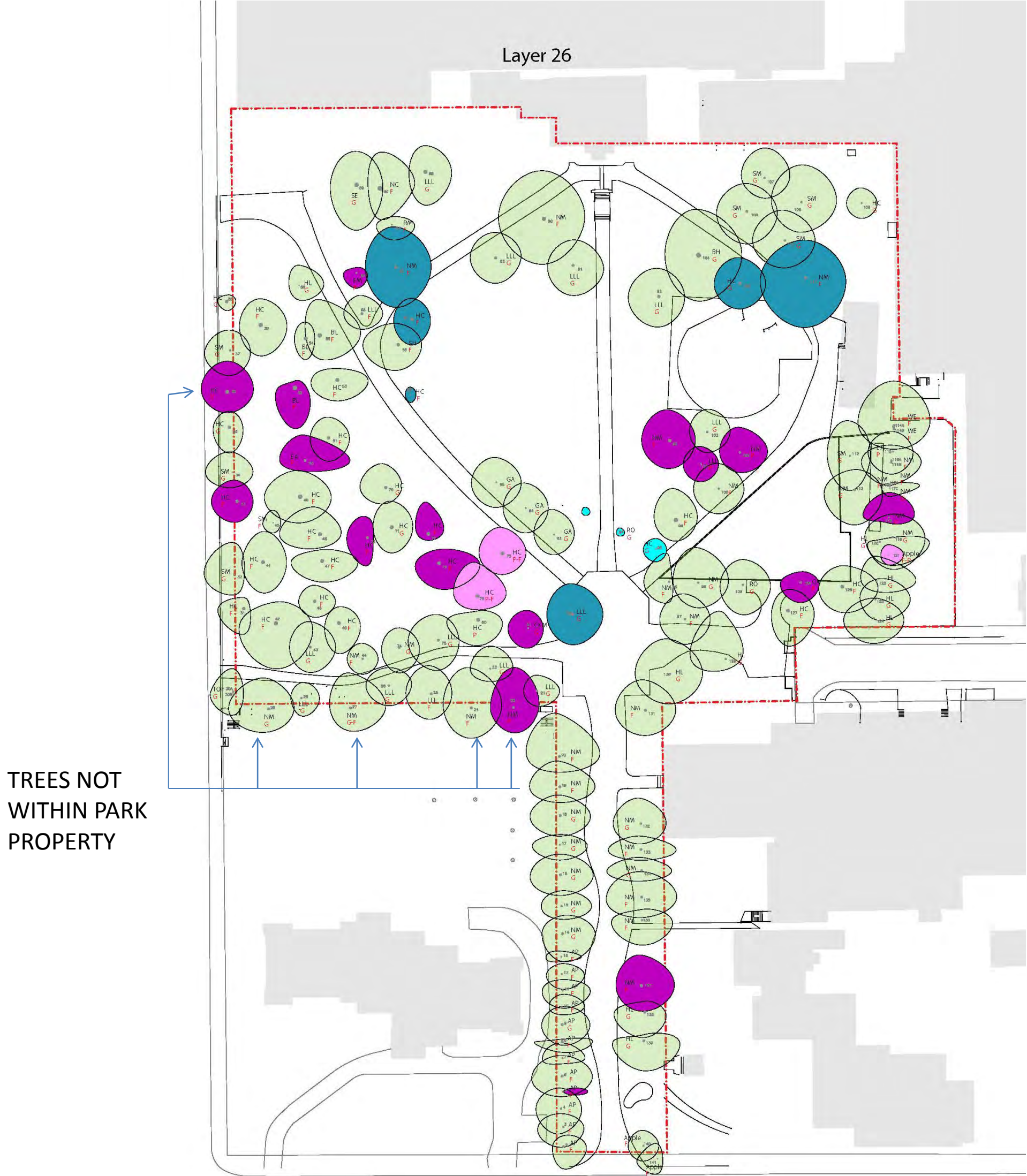
- Add approximately 83 new trees in Grange Park
- Introduce new varieties of quality trees to comply with the City of Toronto Forestry's recommendations to increase some resilience against future diseases and pests.
- Remove 17 trees that are dying, diseased or in poor condition identified by the Arborist and confirmed by City Forestry
- Remove 6 trees to achieve design program
- Prune trees to remove dead wood
- Install irrigation system.
- Improve soil quality.



#### PROJECT PARTNERS:

Grange Park Advisory Committee ■ Art Gallery of Ontario ■ Mr. W. Galen Weston ■ City of Toronto





CURRENT IN PARK PROPERTY	127
IDENTIFIED FOR REMOVAL	-23
NEW TREES	-83
FUTURE	187

- REMOVED TREE – POOR CONDITION (14)
- REMOVED TREE – POOR TO FAIR CONDITION (3)
- TRANSPLANTED TREE (3)
- REMOVED TREE – DESIGN REMOVAL (6)
- PROPOSED TREE (83)
- RETAINED TREE (105)



PROJECT PARTNERS:

Grange Park Advisory Committee ■ Art Gallery of Ontario ■ Mr. W. Galen Weston ■ City of Toronto





American Beech ( *Fagus grandiflora* )



'Accolade' Elm ( *Ulmus Morton 'Accolade'* )



Horse Chestnut ( *Aesculus hippocastanum* )



Red Oak ( *Quercus rubra* )



Apple Tree ( *Malus sp.* )



Columnar Freemanii Maple ( *Acer x freemanii 'Armstrong'* )



Maidenhair Tree ( *Ginkgo biloba* )







Rudbeckia



Calamagrostis



Daylily

### PERENNIAL BORDER



Brunnera macrophylla



Epimedium



Dicentra

### SHADE TOLERANT PERENNIALS



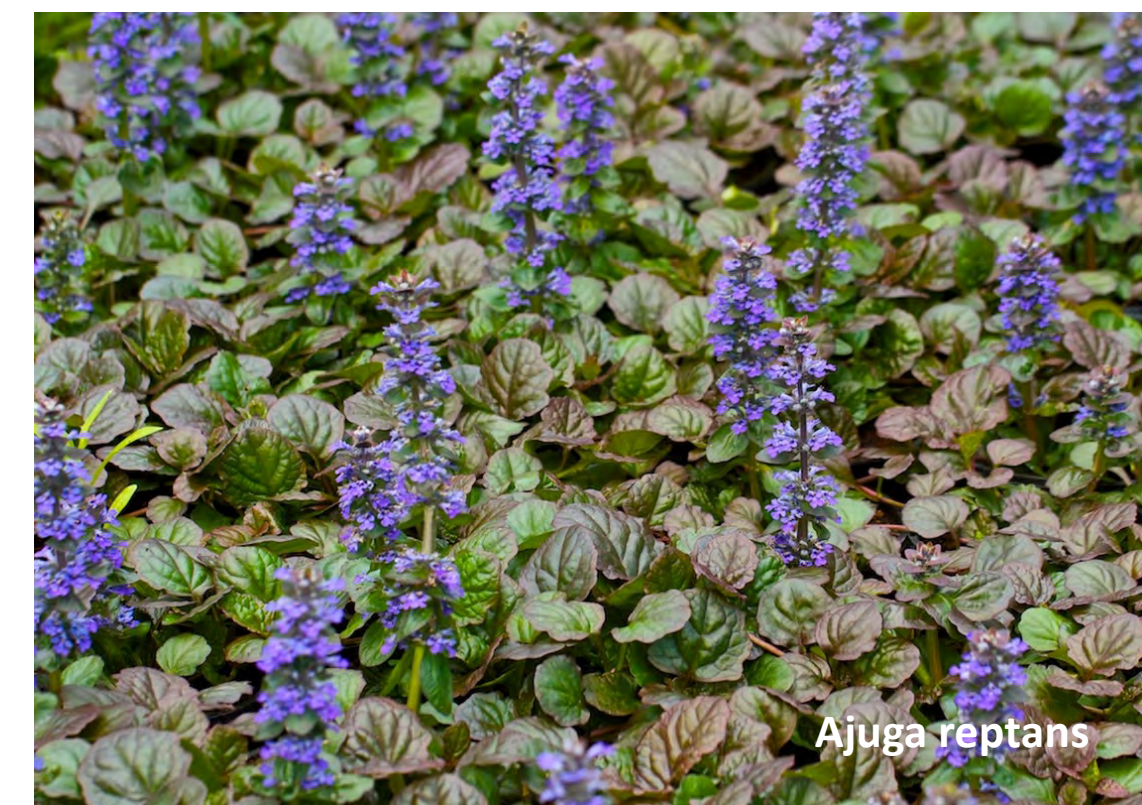
Galium odoratum



Pachysandra



Vinca



Ajuga reptans

### GROUNDCOVERS



### PROJECT PARTNERS:

Grange Park Advisory Committee

■ Art Gallery of Ontario

■ Mr. W. Galen Weston

■ City of Toronto





Allium



Echinacea

SIGHT



Butterfly Bush



Sweet Pea

SMELL



Lambs Ear



Fountain Grass

TOUCH



### PROJECT PARTNERS:

Grange Park Advisory Committee



Art Gallery of Ontario



Mr. W. Galen Weston



City of Toronto





## PROJECT PARTNERS:

Grange Park Advisory Committee

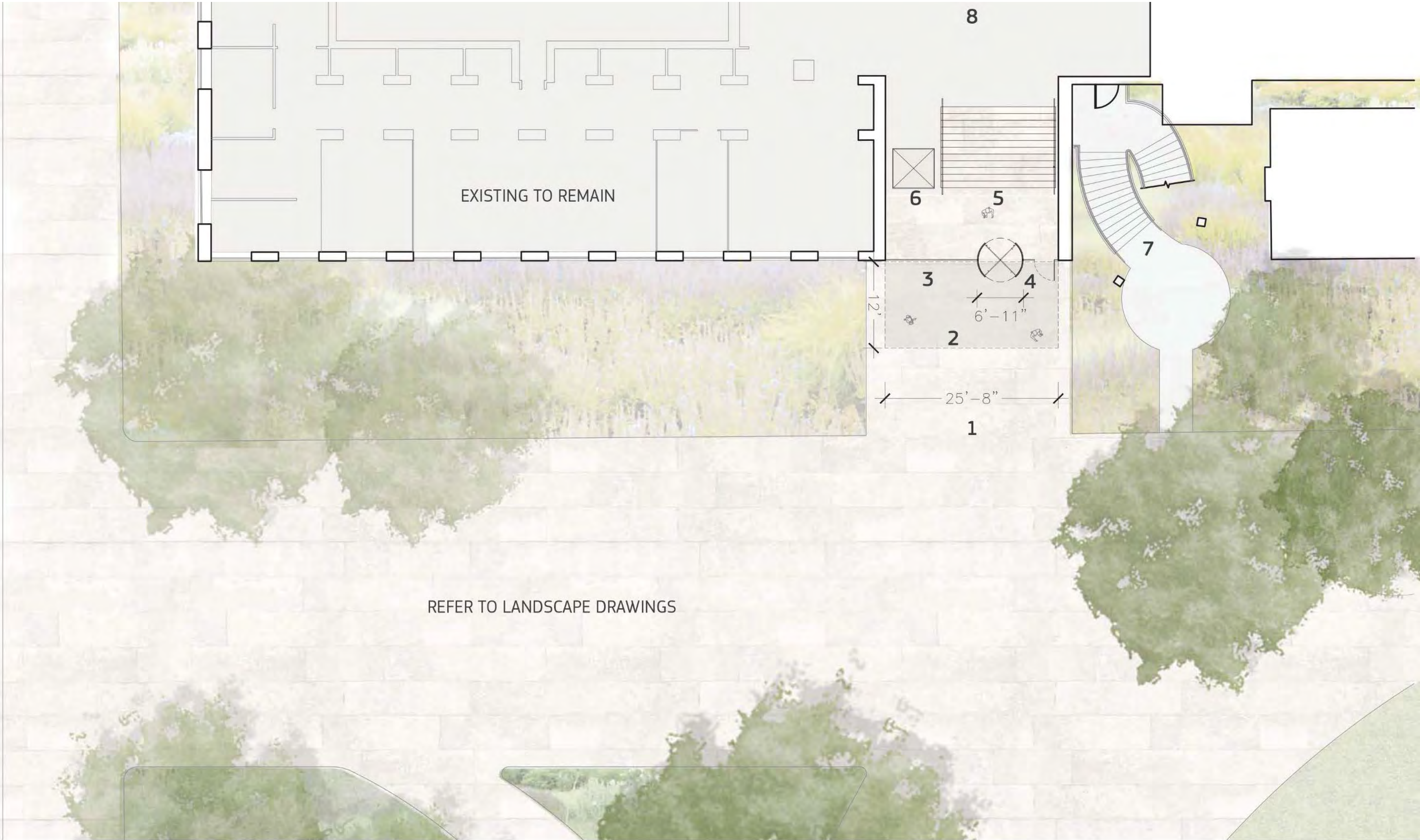
■ Art Gallery of Ontario

■ Mr. W. Galen Weston

■ City of Toronto



BEVERLY STREET



- 1 Proposed Hardscape Entrance (Refer to Landscape Drawings for Elevation)
- 2 Proposed Entrance Canopy Above
- 3 Proposed Glazing at Entrance
- 4 Proposed Glass Revolving Door with Adjacent Power-Operated Barrier Free Door
- 5 Proposed Interior Stair to Concourse Level
- 6 Proposed Glass Elevator
- 7 Existing Exterior Stair To Remain
- 8 Future Public Program at Concourse Level



**Schematic Plan**  
Grange Entry  
May 27, 2014  
1/16" = 1'0"

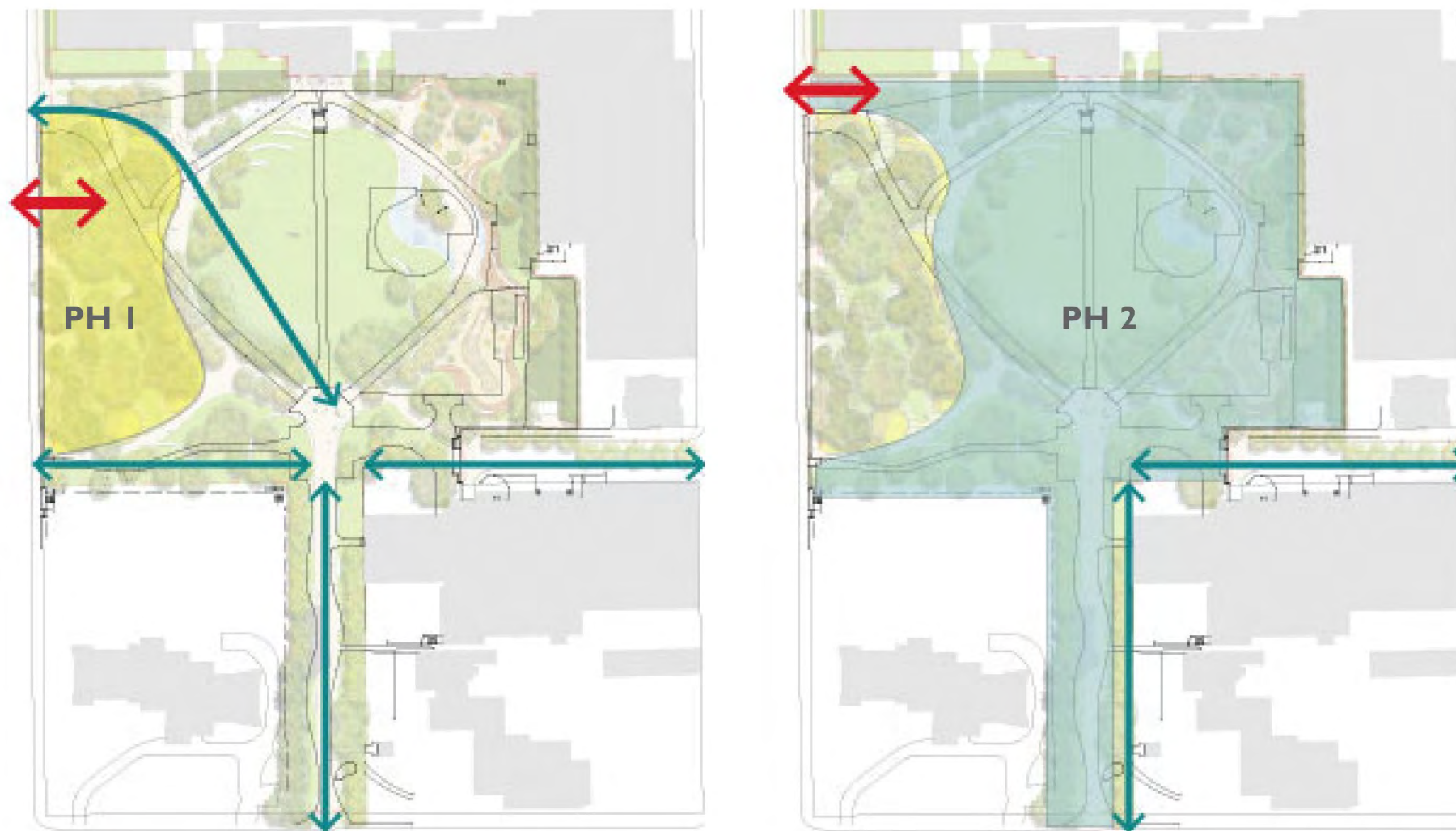


**PROJECT PARTNERS:**

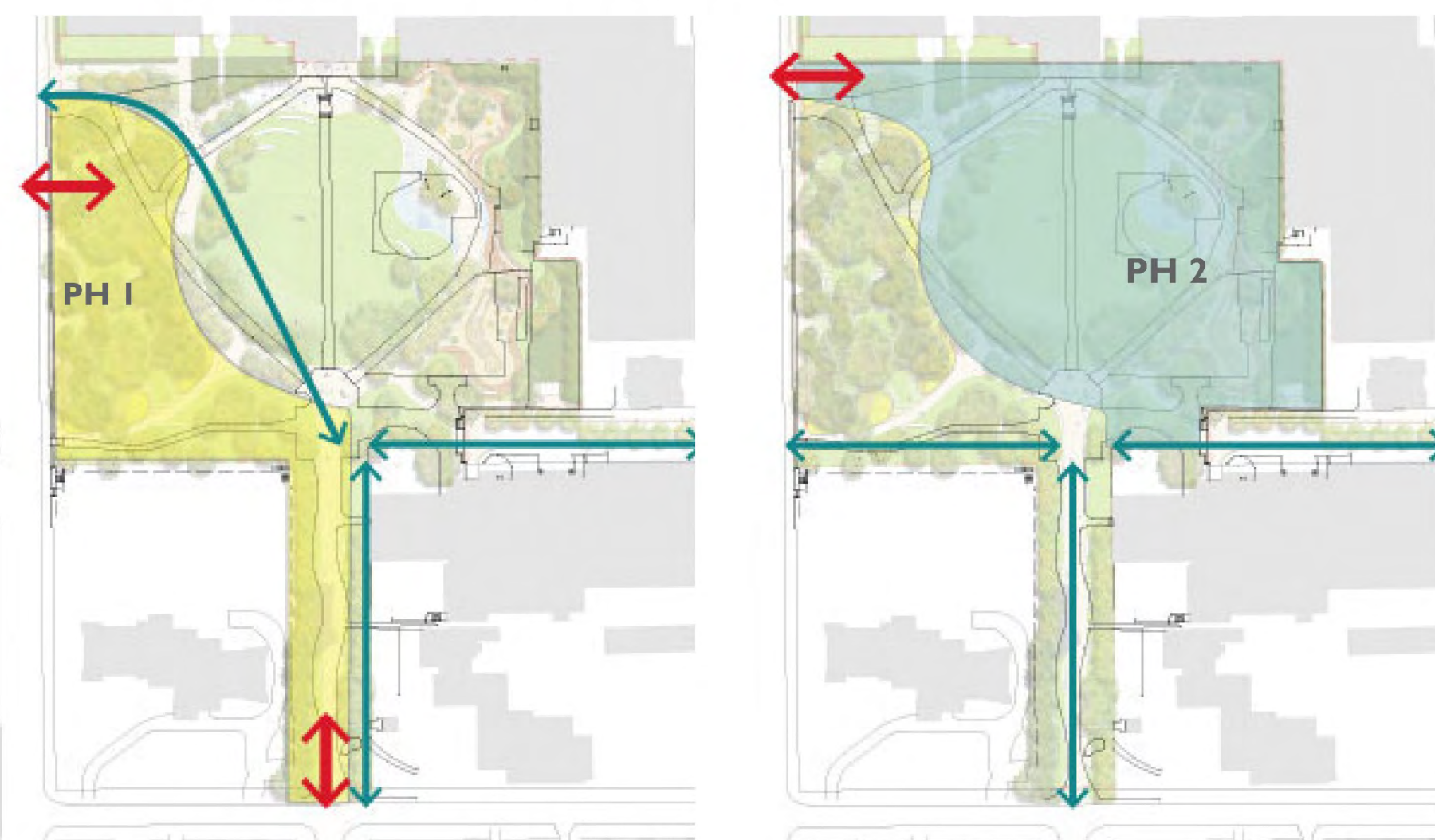
**Grange Park Advisory Committee** ■ **Art Gallery of Ontario** ■ **Mr. W. Galen Weston** ■ **City of Toronto**



There are two possible scenarios for the phasing of park construction. In both options the intent is to construct different portions of the site separately to allow access to and use of the park throughout construction.



↔ Construction Site Access  
↔ Pedestrian Path  
(Maintained During Construction)



### OPTION 1:

- Phase 1 - west portion of the site
- Close late summer 2014 for construction
- Re-open late fall 2014
- Construction site access off Beverley Street
- Rest of the site open for use while Phase 1 is under construction
- Phase 2 - east portion of the site
- Close late summer 2014 (after completion of Phase 1) for construction
- Re-open late fall 2015
- Construction site access off Beverley Street

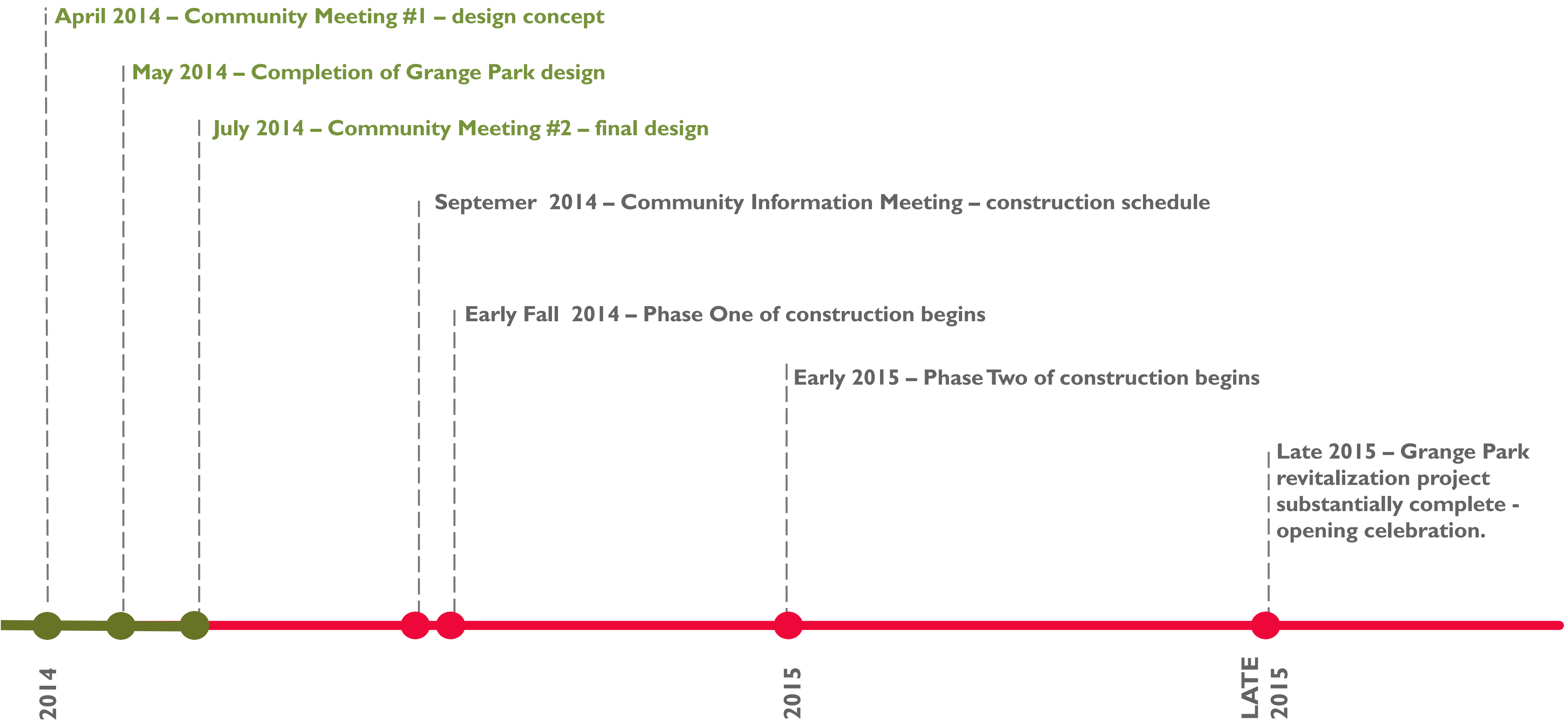
### OPTION 2:

- Phase 1 - west portion of the site and John Street Promenade
- Close late summer 2014 for construction
- Re-open late fall 2014
- Construction site access off Beverley and Stephanie Street
- Rest of the site open for use while Phase 1 is under construction
- Phase 2 - east portion of the site
- Close late summer 2014 (after completion of Phase 1) for construction
- Re-open late fall 2015
- Construction site access off Beverley Street

### PROJECT PARTNERS:

Grange Park Advisory Committee ■ Art Gallery of Ontario ■ Mr. W. Galen Weston ■ City of Toronto





PROJECT PARTNERS:

Grange Park Advisory Committee ■ Art Gallery of Ontario ■ Mr. W. Galen Weston ■ City of Toronto



## HOW TO CONTACT US

Website: [www.grangeparktoronto.ca](http://www.grangeparktoronto.ca)

Email: [information@grangeparktoronto.ca](mailto:information@grangeparktoronto.ca)

Mail: Grange Park Advisory Committee  
c/o Art Gallery of Ontario (AGO)  
317 Dundas Street West Toronto,  
ON  
M5T 1G4

For more information on PFS Studio, please visit: [www.pfs.bc.ca](http://www.pfs.bc.ca)



### PROJECT PARTNERS:

Grange Park Advisory Committee ■ Art Gallery of Ontario ■ Mr. W. Galen Weston ■ City of Toronto





## PROJECT PARTNERS:

Grange Park Advisory Committee ■ Art Gallery of Ontario ■ Mr. W. Galen Weston ■ City of Toronto